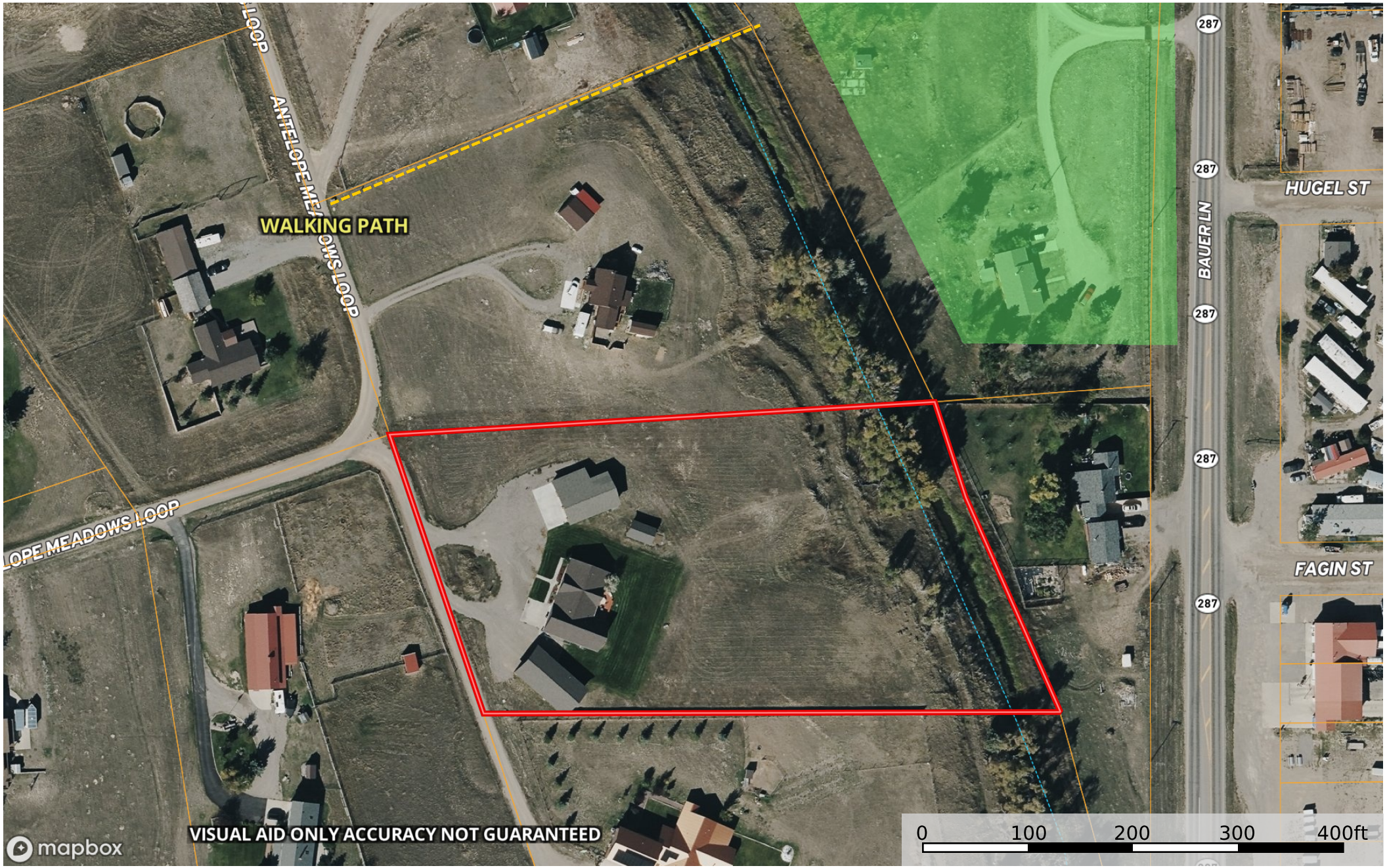


104 Antelope Meadows Road

Madison County, Montana, 3.439 AC +/-



VISUAL AID ONLY ACCURACY NOT GUARANTEED

- Walking path to town
- Boundary
- Forest Service
- State Land
- Fish and Wildlife
- National Park
- Other
- BLM
- Local Government
- Conservation Easements
- Stream, Intermittent
- River/Creek
- Water Body